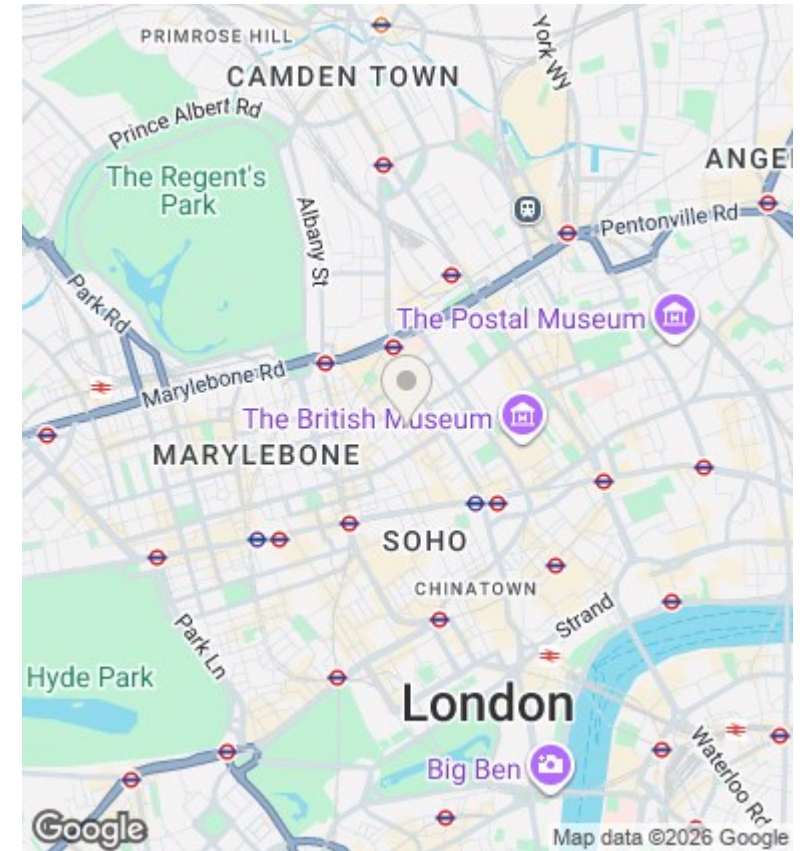
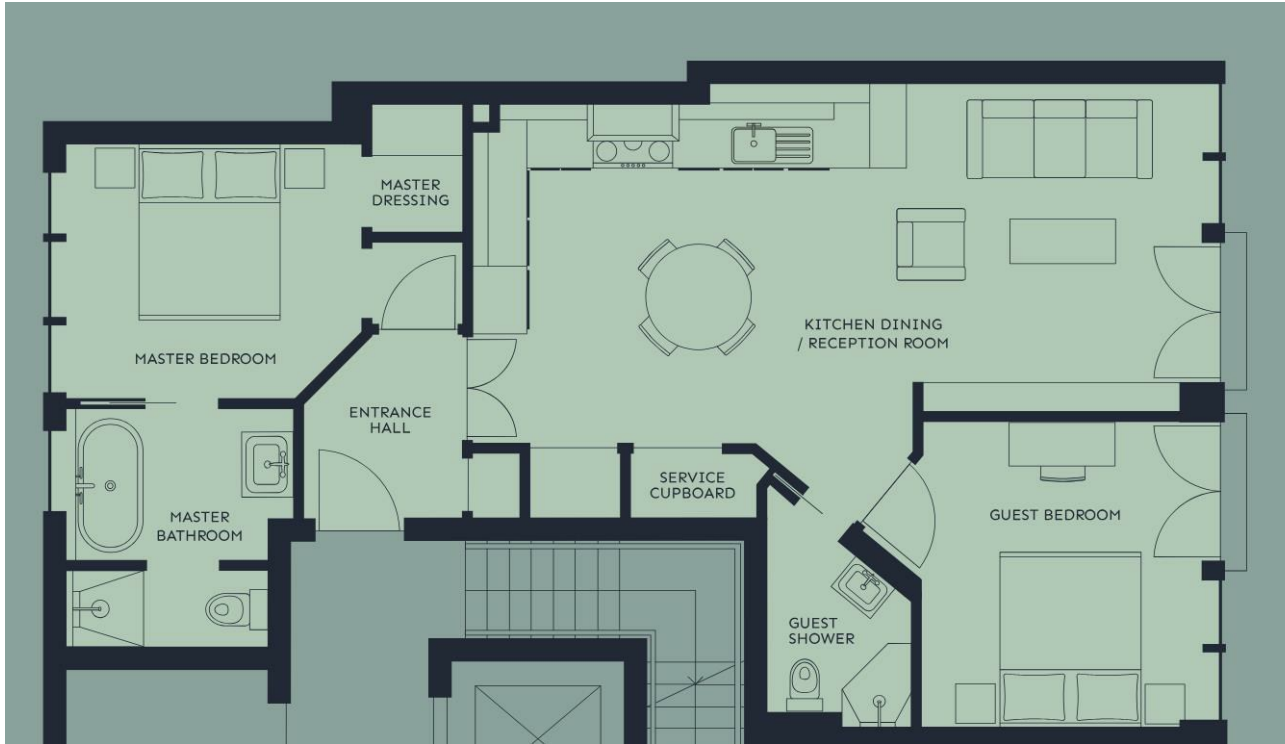




Tottenham Mews, London W1T 4AB

£6,750 Per Month

- Furnished to a high standard
- Approx 810 sq foot
- Juliette Balcony
- Available now!
- 2 double bedrooms & 2 Bathrooms
- Carrara Marble Worktops and Backsplash
- New build apartment!
- Herringbone Oak Floors
- Floor-to-Ceiling Mews Facing Windows
- Located in the heart of Fitzrovia!



Viewings

Viewings by arrangement only.
Call 02077225022 to make an appointment.

Council Tax Band

New Build

EPC Rating:

B

Energy Efficiency Rating		Current	Potential
<i>Very energy efficient - lower running costs</i>			
(92 plus) A			
(81-91) B		86	86
(69-80) C			
(55-68) D			
(39-54) E			
(21-38) F			
(1-20) G			
<i>Not energy efficient - higher running costs</i>			
England & Wales		EU Directive 2002/91/EC	